



COMUNE DI PORTO MANTOVANO

PROVINCIA DI MANTOVA




RIQUALIFICAZIONE DI VIA DELLA LIBERTA' A SOAVE DI PORTO MANTOVANO

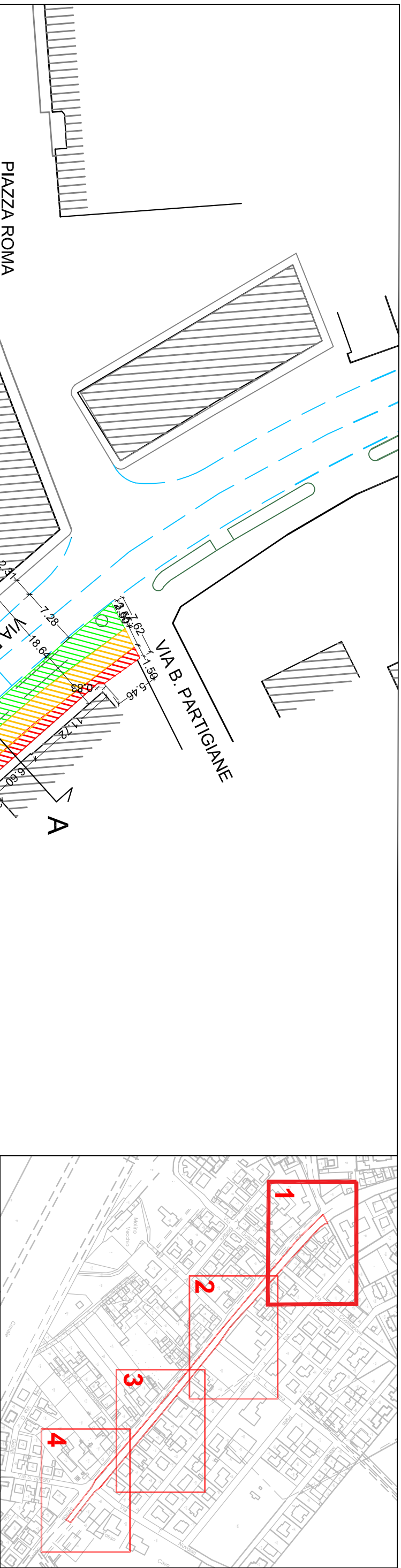
PROGETTO PRELIMINARE

(art. 17 D.P.R. 207/2010)

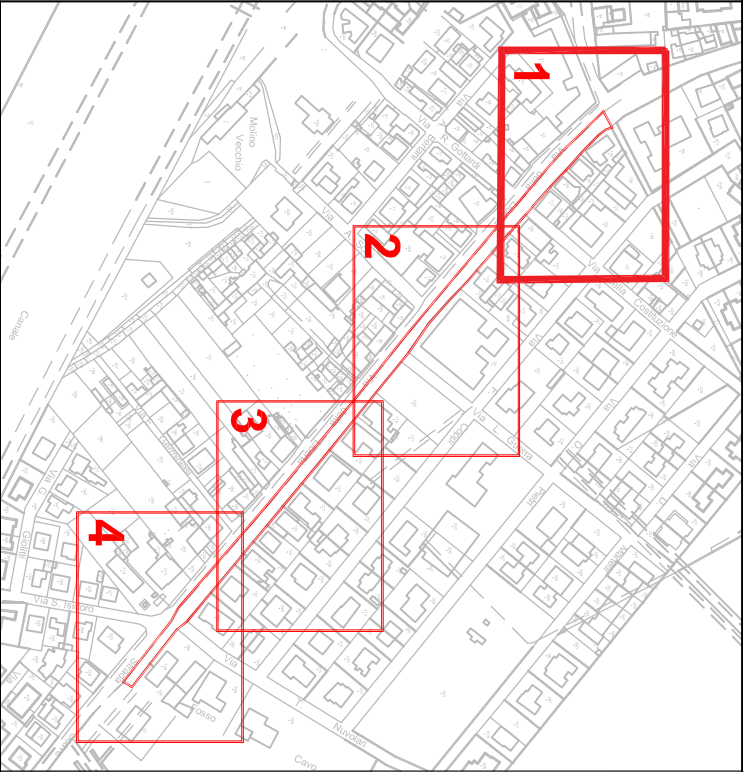
PLANIMETRIE STATO DI PROGETTO SCALA 1:500, SEZIONE TRASVERSALE SCALA 1:200 E PARTICOLARE SCALA 1:50



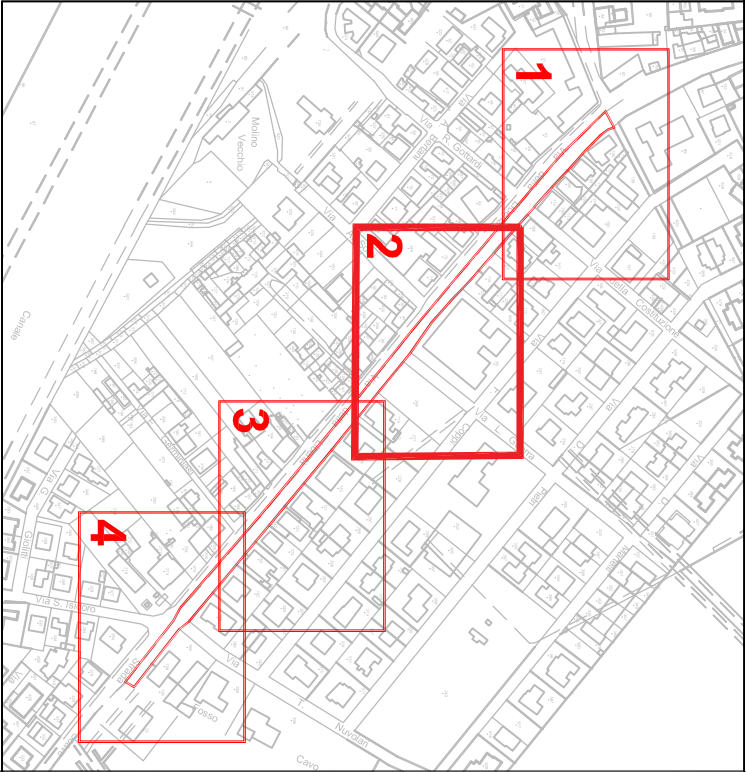
Responsabile Unico del Procedimento: architetto Rosanna Moffa		Progettisti: architetto Giuseppe Menesto  architetto Rosanna Moffa  
Elaborato: 03	Data: 22/12/2015	



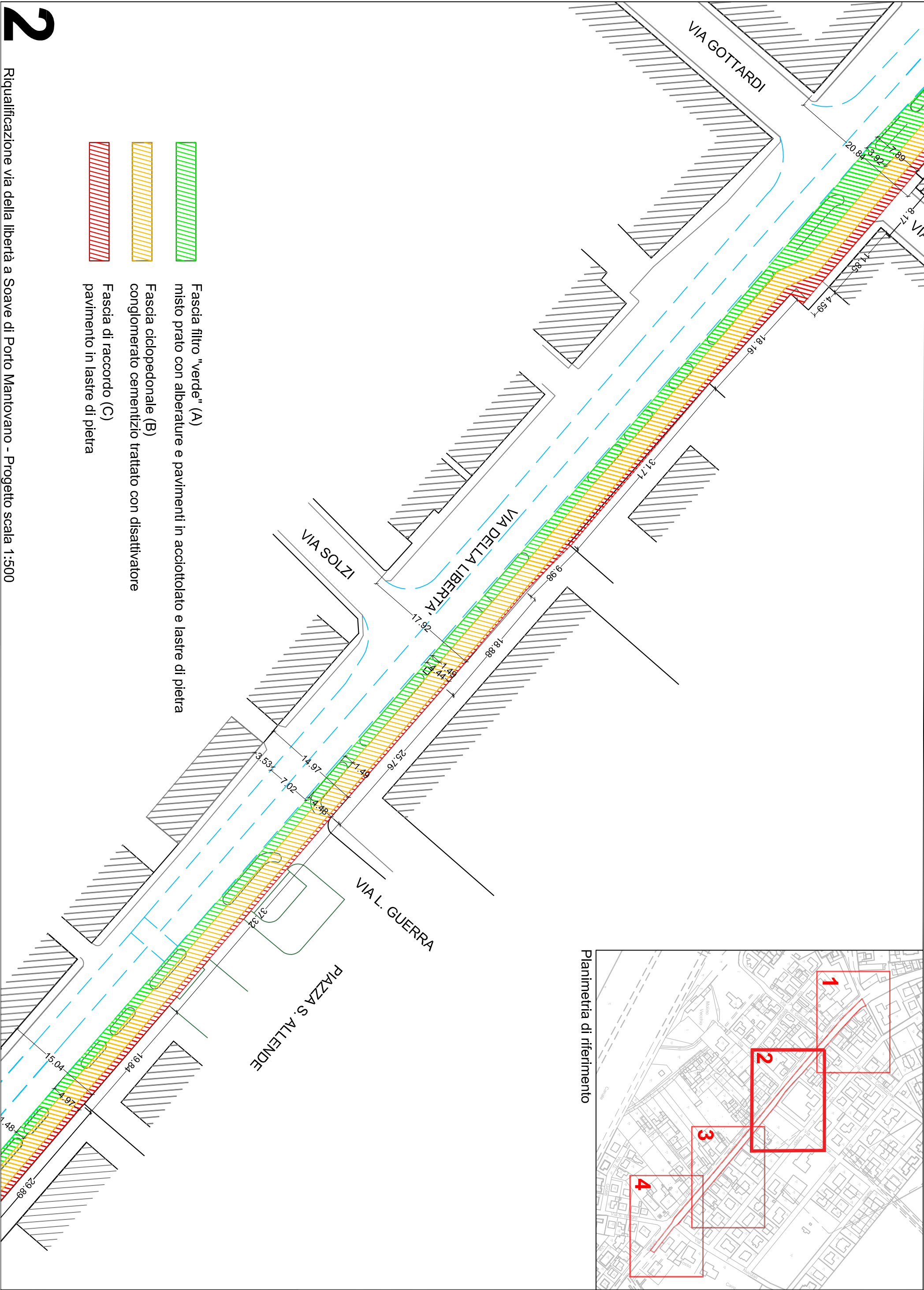
Planimetria di riferimento



- Fascia filtro "verde" (A)
misto prato con alberature e pavimenti in acciottolato e lastre di pietra
- Fascia ciclopedonale (B)
conglomerato cementizio trattato con disattivatore
- Fascia di raccordo (C)
pavimento in lastre di pietra



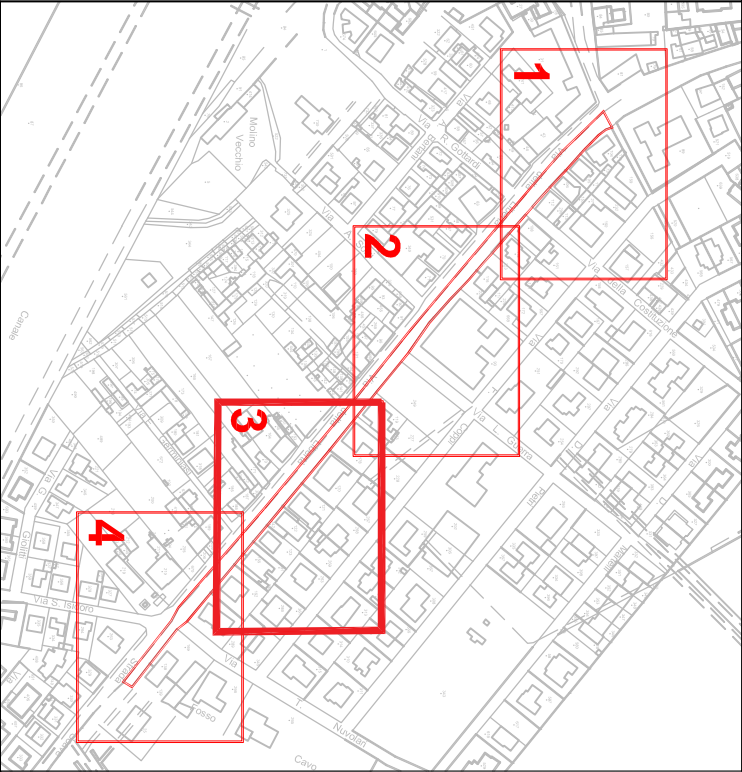
Planimetria di riferimento



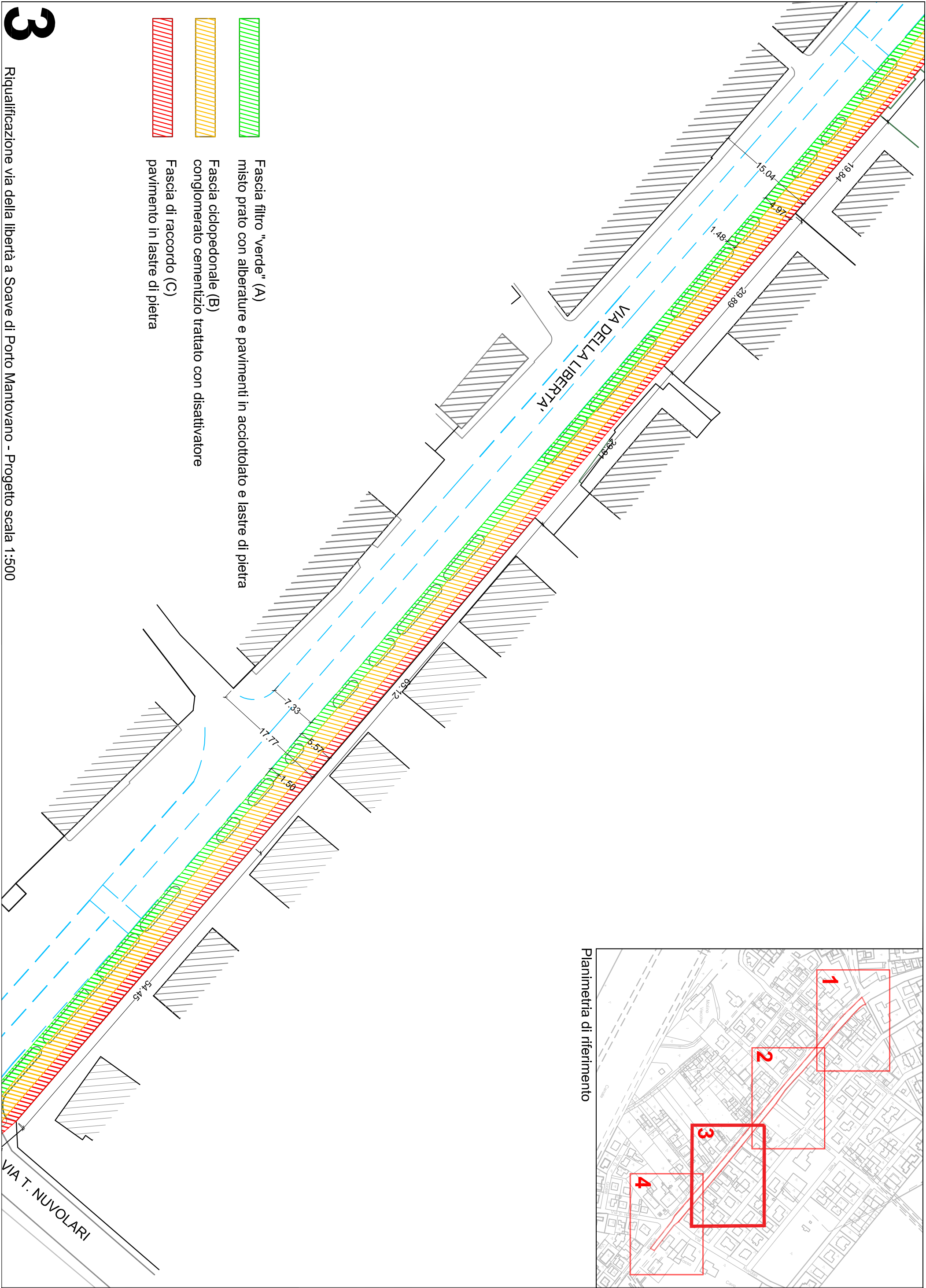
Fascia filtro "verde" (A)
misto prato con alberature e pavimenti in acciottolato e lastre di pietra

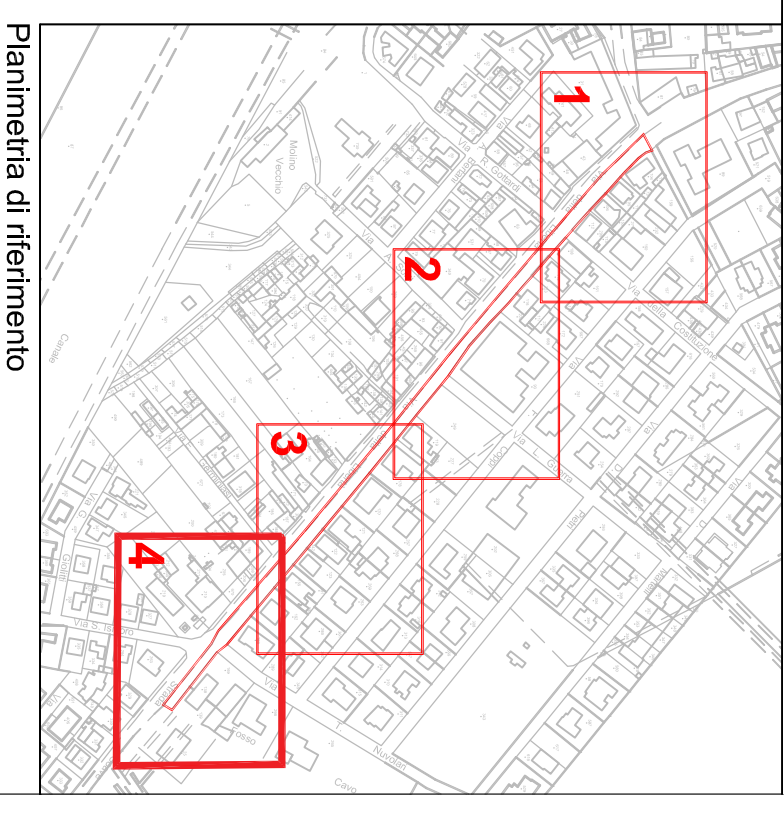
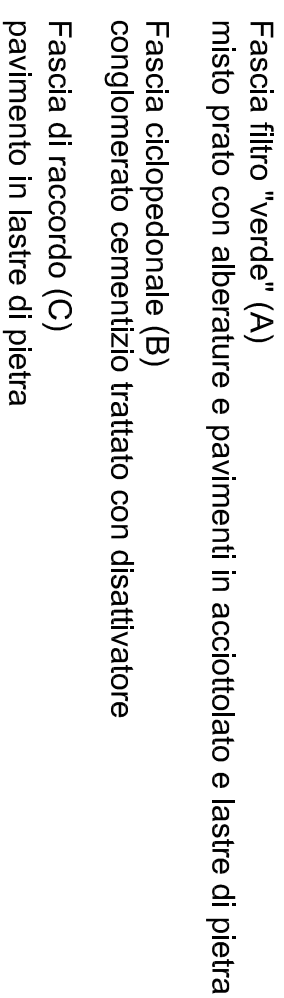
Fascia ciclopedonale (B)
conglomerato cementizio trattato con disattivatore

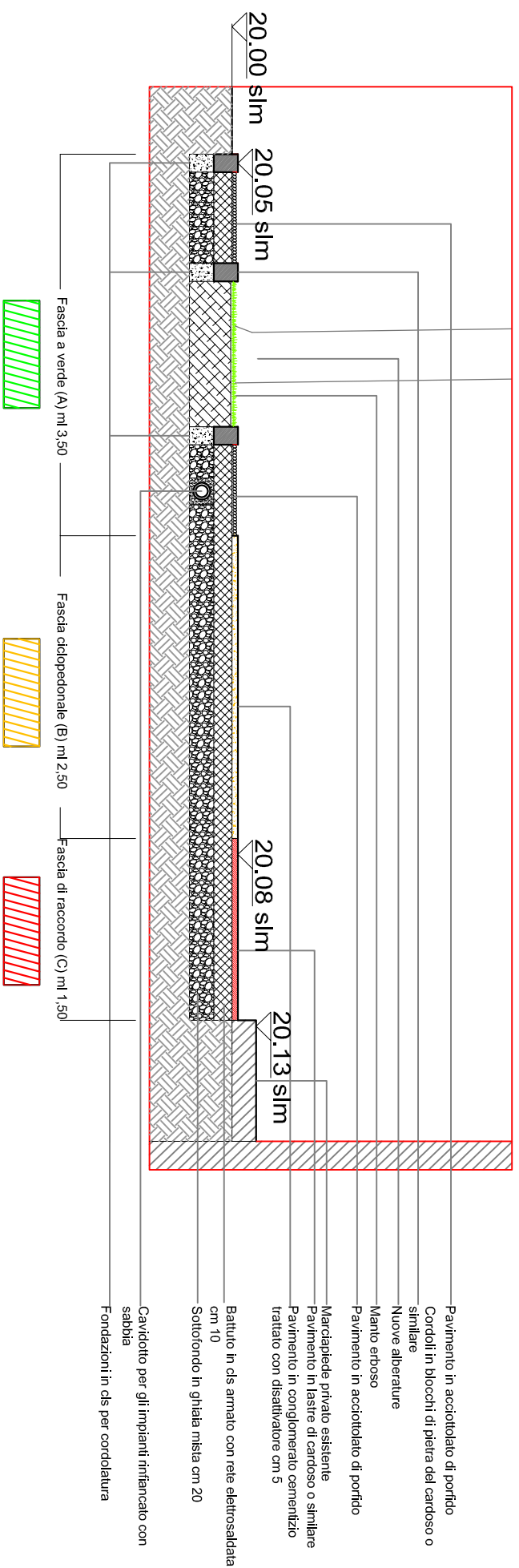
Fascia di raccordo (C)
pavimento in lastre di pietra



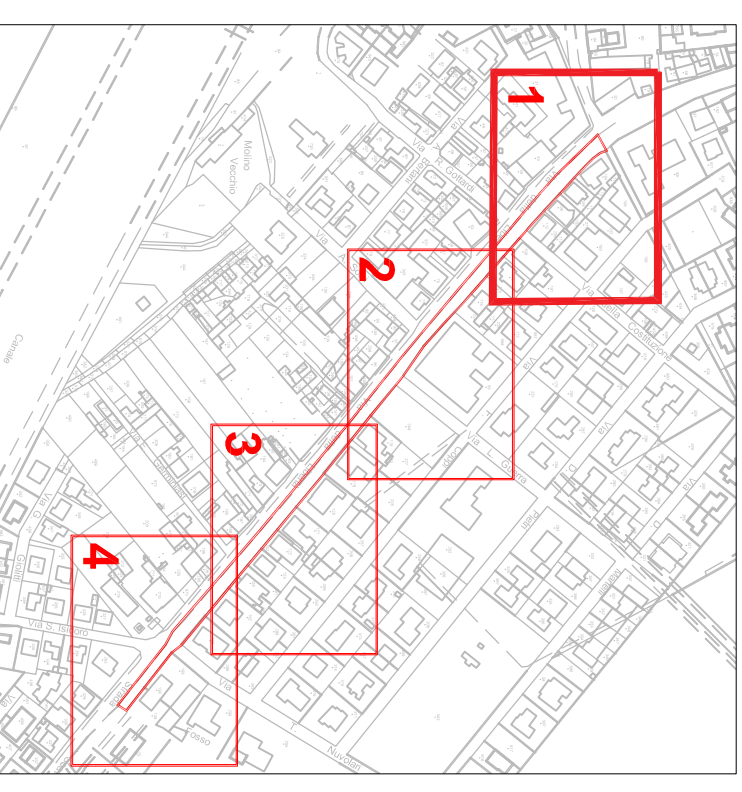
Planimetria di riferimento



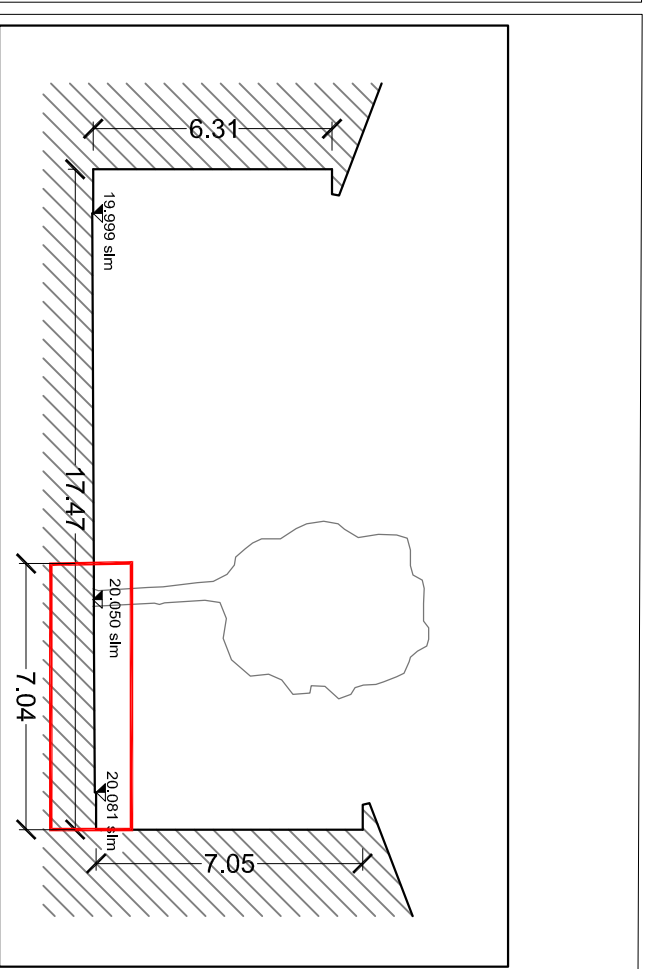
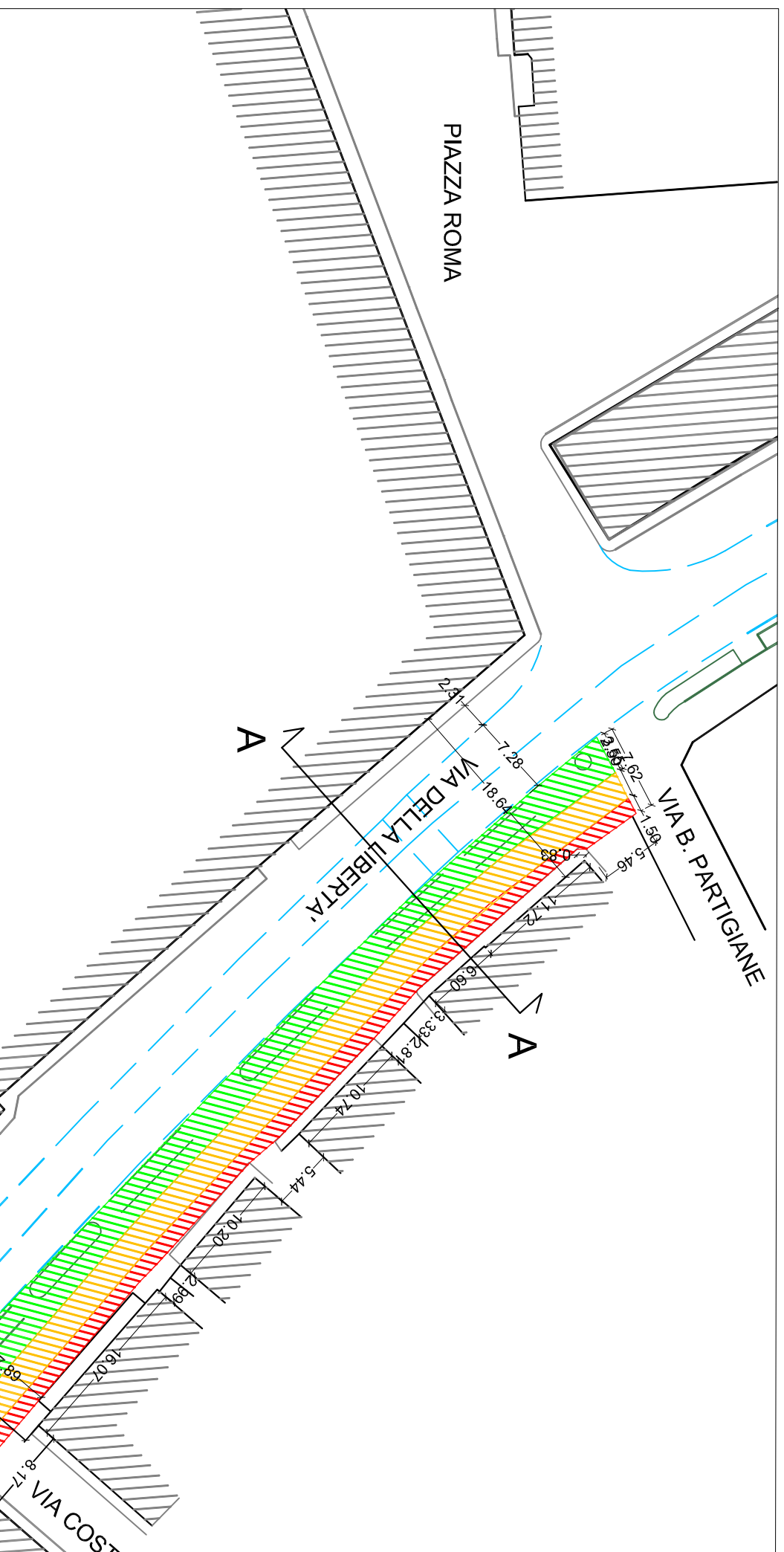




Sezione 1 scala 1:50



Planimetria di riferimento



Sezione AA scala 1:200