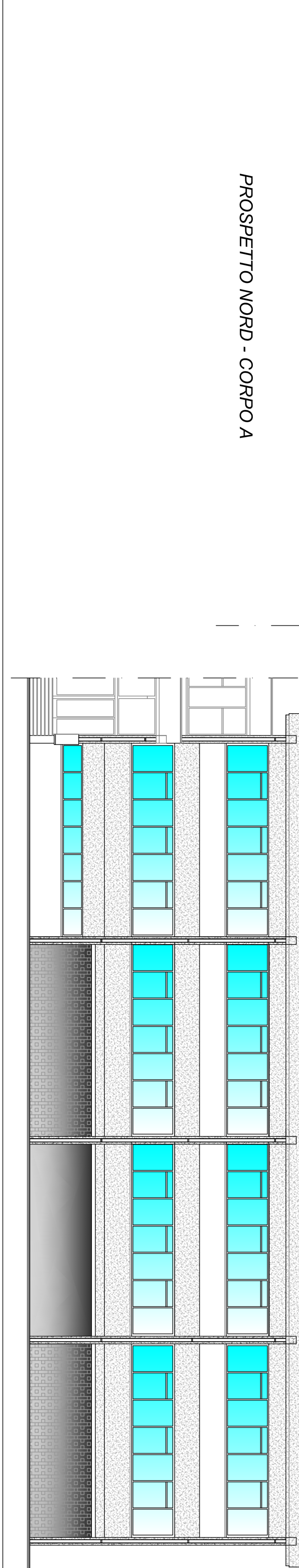
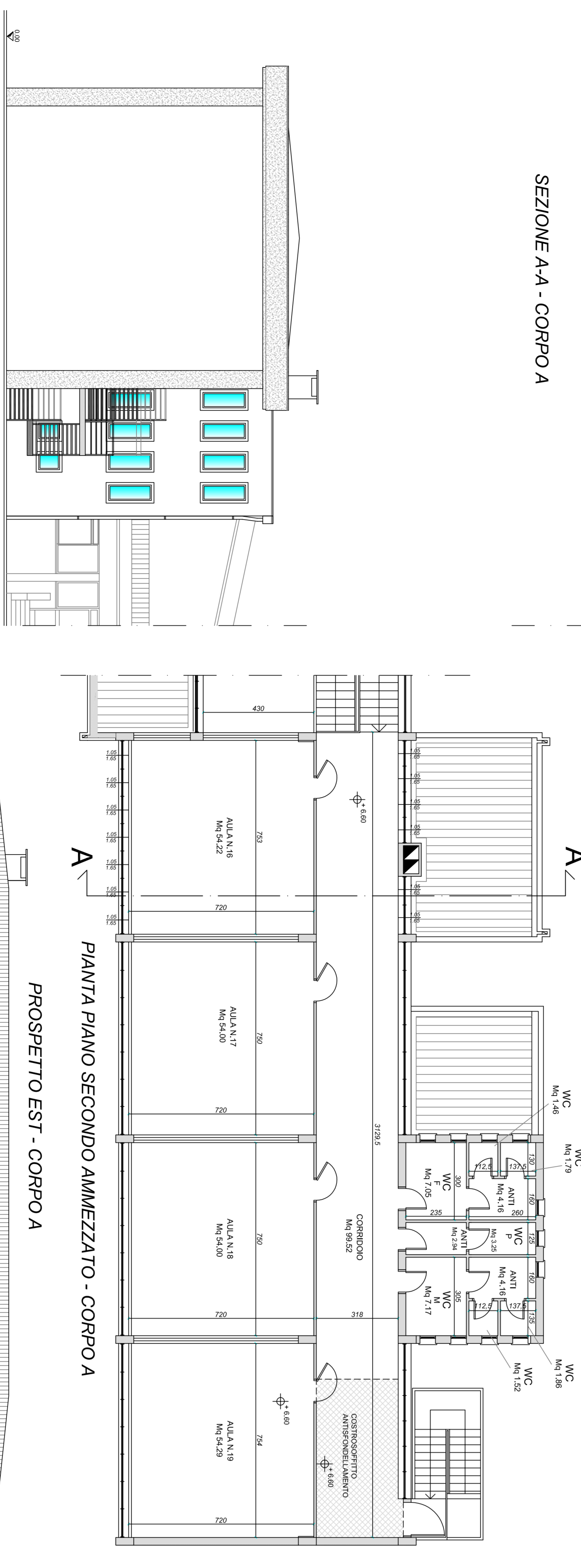
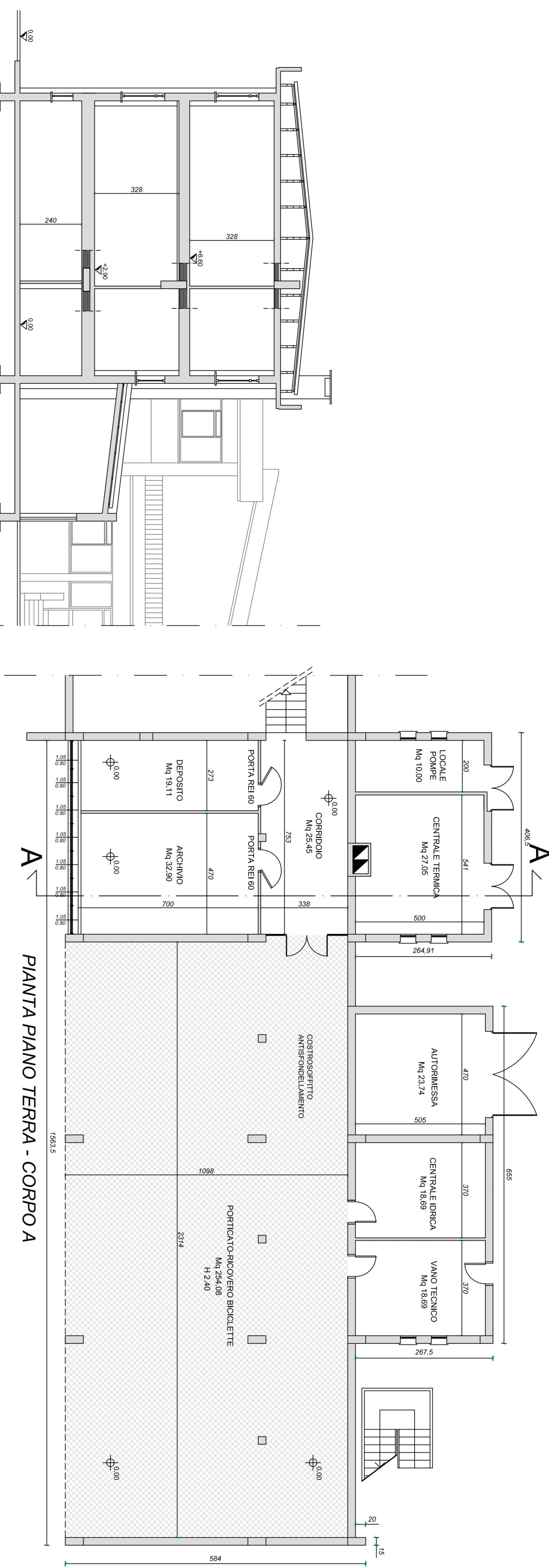
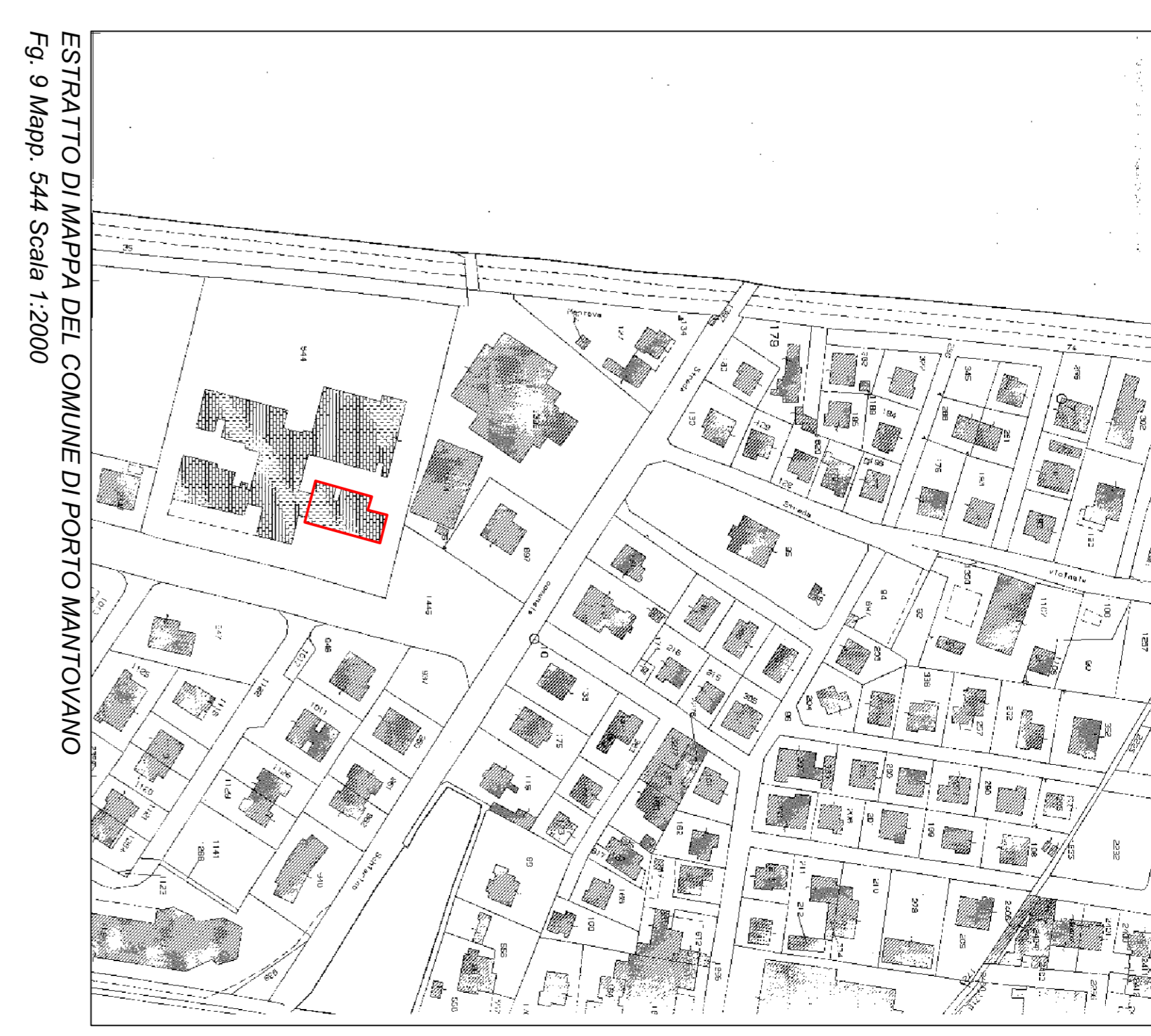
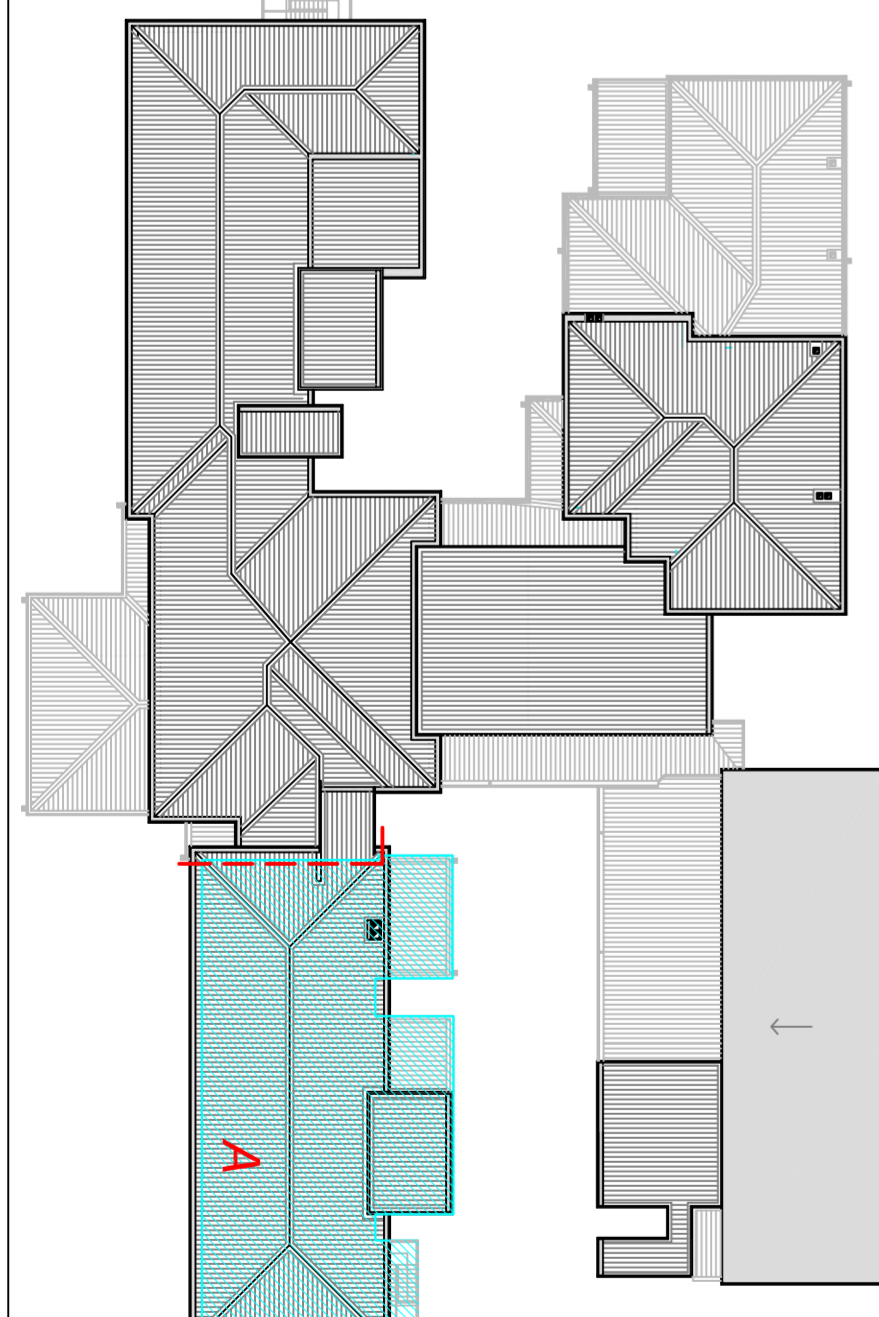
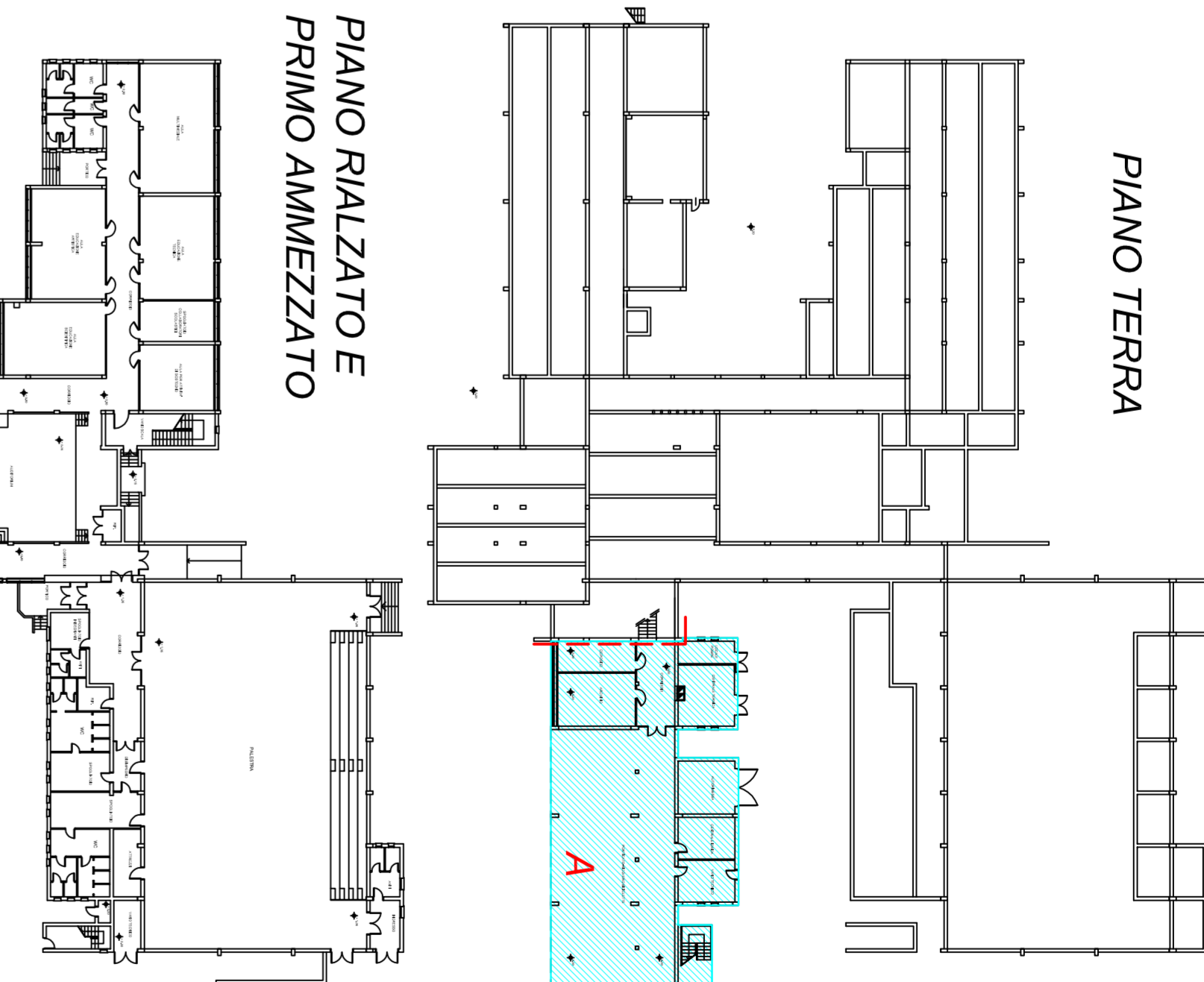
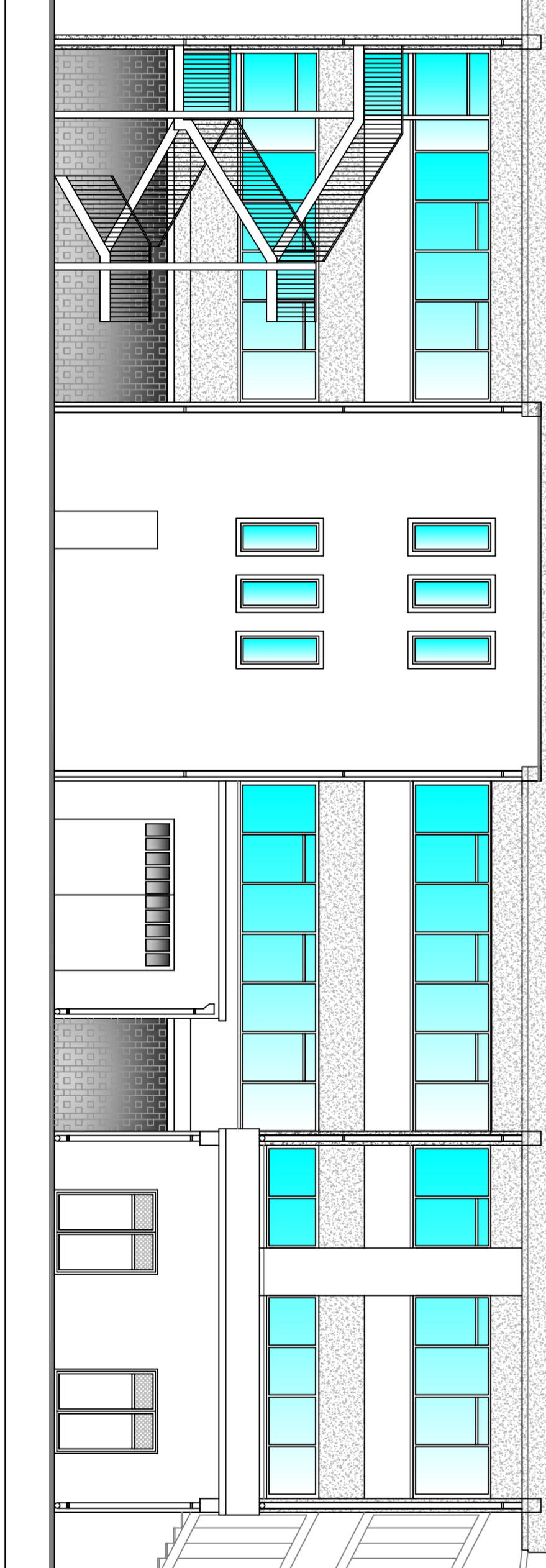
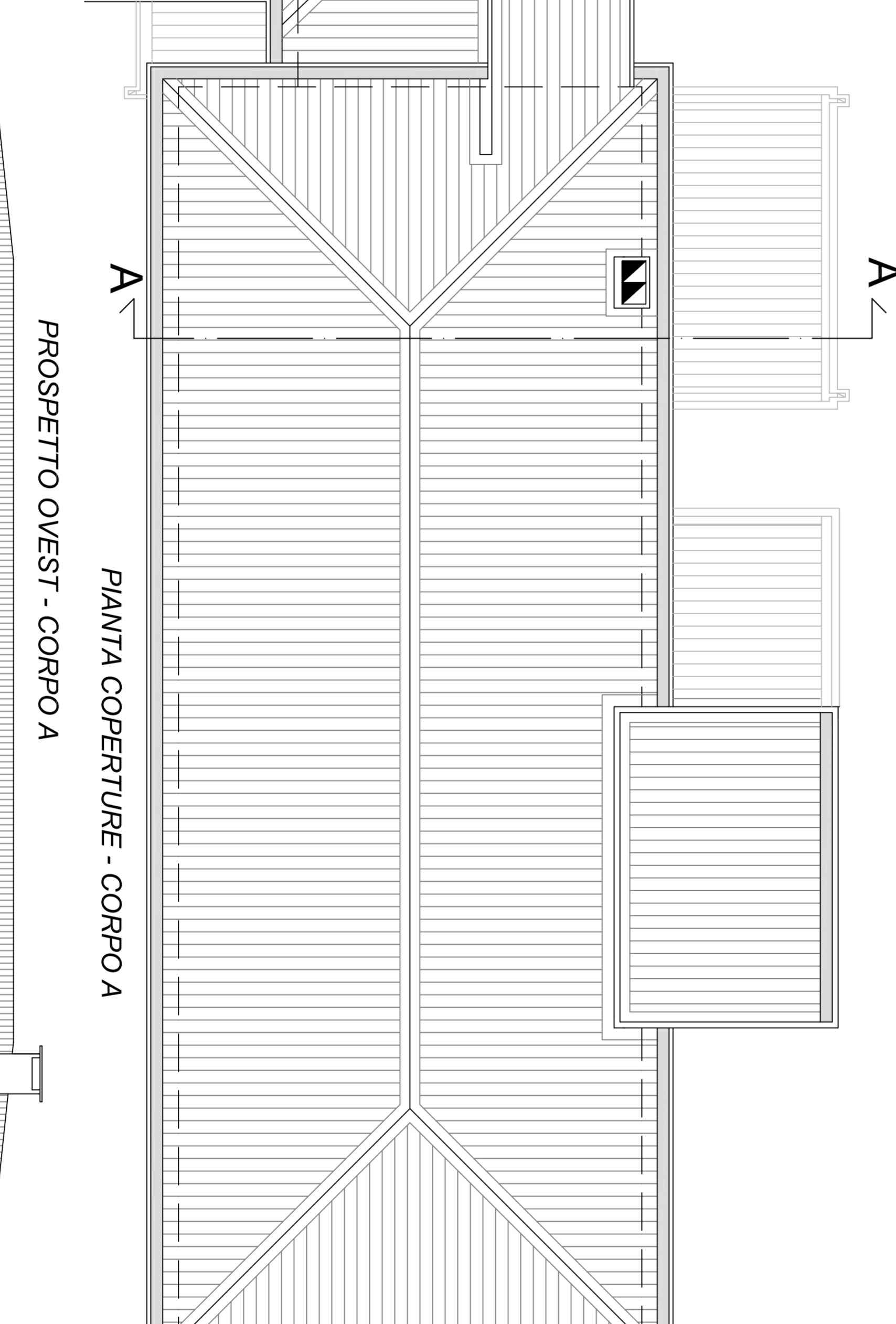
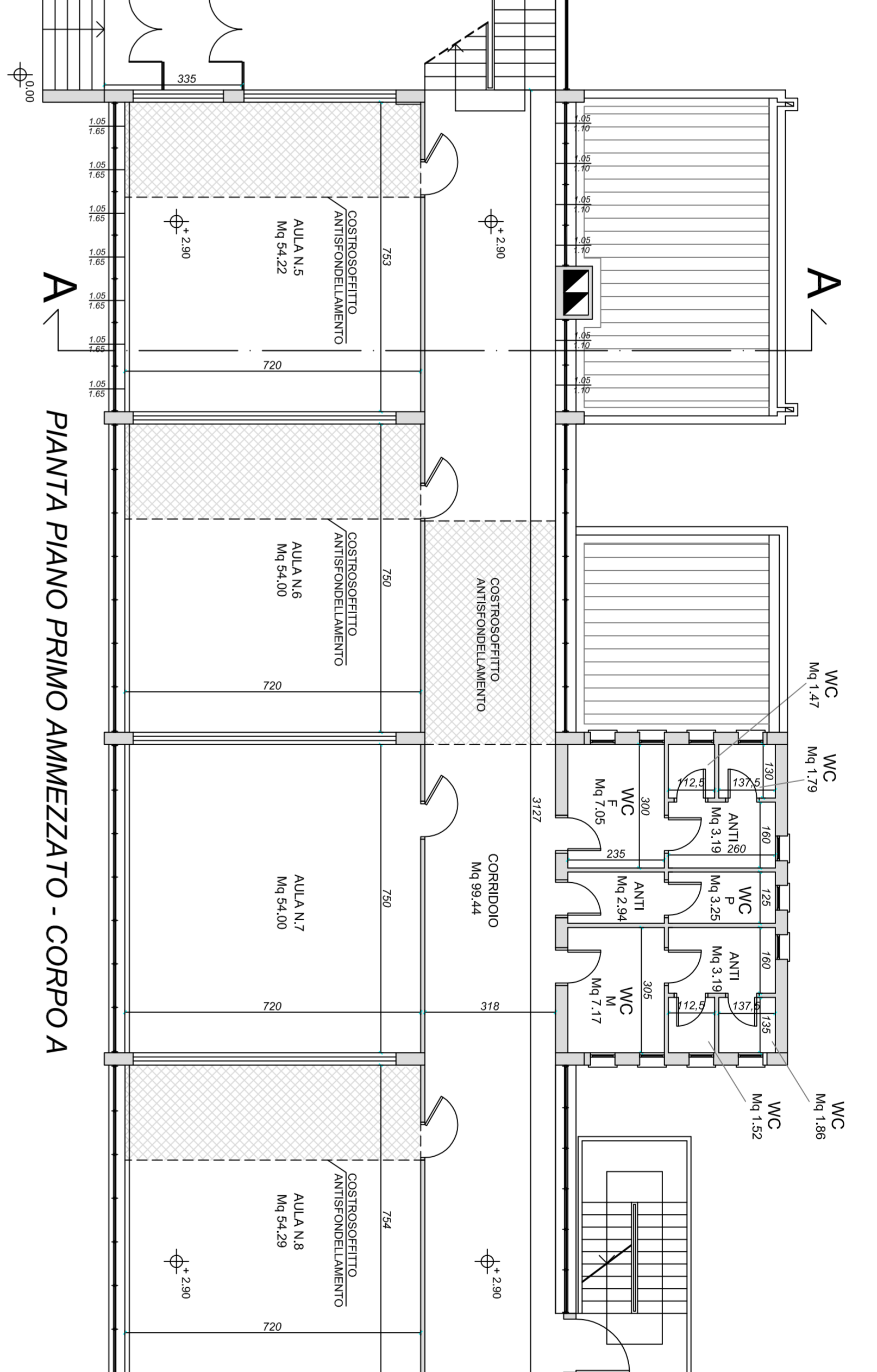


STATO DI FATTO scala 1:100



LAYOUT scala 1:500



Strada di fogliatura		Dot. Ing. Traini Bellini Massimo		Via L. Bevilacqua, 123 - 46047 PORTO MANTOVANO Provincia Reggio Emilia - Tel. 0576/300083 E-mail: massimo.traini@univall.it	
PROGETTO DEFINITIVO		PROVINCIA DI MANTOVA COMUNE DI PORTO MANTOVANO		MIGLIORAMENTO SISMICO SOLAI E MEDIE DI PORTO MANTOVANO VIA C. MONTEVERDI LOC. BAUCOLE 1° LOTTO - BLOCCO A	
PROGETTISTA INCARICATO:		Ing. Massimo Traini Bellini		COLLABORAZIONE:	
1° LOTTO - BLOCCO A		Ing. Massimo Traini Bellini		Arch. Tiziana Bellini	
OGGETTO:		ESTRATTI DI MAPPE E PGT		PIANTE, SEZIONE E PROSPETTI	
DELLO STATO DI FATTO					
PDef.01		REV. 00			
Scale:		1:500		1:2000	